

[www.americanwhitney.com](http://www.americanwhitney.com)

# No. 2 Punch

## 5 Ton Capacity

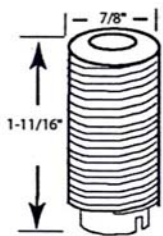
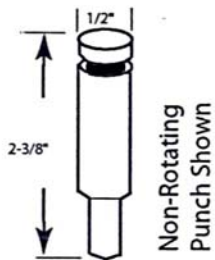
**Punches 1/4" Dia. Hole  
thru 1/4" mild steel**

**This durable, lightweight, powerhouse  
of a punch will provide years of trou-  
ble-free service. Unique cam action  
eliminates undue operator strain.**

**Punch Style #2**

Drop-forged steel parts

Nickel Plated



Punch - Notch - Cope - Mitre - Clip

Metal - Veneer - Leather - Plastic - Other Materials

**Die Style #2**

**Round**

1/16" - 3/32" - 1/8" - 5/32" - 3/16" - 7/32" - 1/4"  
9/32" - 5/16" - 11/32" - 3/8" - 13/32" - 7/16"  
15/32" - 1/2"



Standard Stock  
Round Punch  
Die Sizes

**Non Standard Rounds are Available**

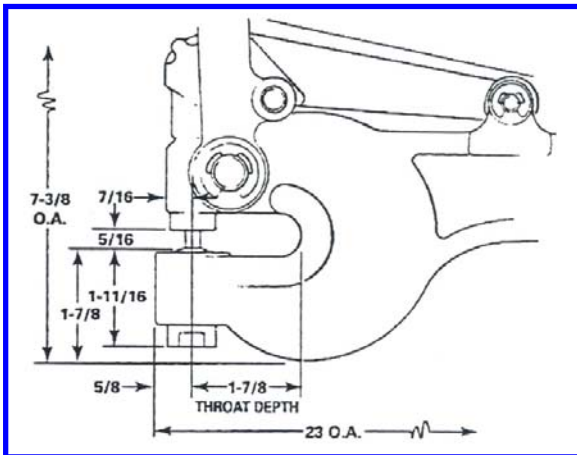
2620 Auburn St. • Rockford, Illinois 61101 • Phone: 815-965-1792 • Fax: 815-965-1049



**Optional Vice  
(for bench mounting)**



## No. 2 Hand Operated Punch



- Fast and efficient
- Punches clean holes in just seconds
- Eliminates the need for electric drill, extension cords, power source, drill bits and center punching

Capacity.....5 Ton  
 Maximum Diameter (thru 10 ga. Mild steel .....1/2"  
 Maximum Thickness (mild steel, 3/8" diam. Hole....1/4"  
 Throat Depth.....1-7/8"  
 Space between Punch and Die.....5/16"  
 Overall Length (includes 24" removable pipe handles).....23"  
 Weight (including handles).....14lbs

### What Die Clearance do you need?

As a general rule, proper die clearance should run about 10% to 20% of the thickness of material.

<b>Material Size</b>	<b>.006</b>	<b>.021*</b>	<b>.037**</b>
22 ga. thru 14 ga.	X		
12 ga. Thru 5/32"		X	
3/16" thru 1/4"			X

\* Use next 1/64" larger die with .006" clearance.  
 \*\* Use next 1/32" larger die with .006" clearance.

Standard Dies have .006" Clearance for Mild Steel  
 .021" Clearance for Stainless Steel

### What tool tonnage do you need?

<b>Punch Dia.</b>	<b>X</b>	<b>Material Thickness</b>	<b>X</b>	<b>80</b>	<b>=</b>	<b>Tons of Pressure</b>	<b>X</b>	<b>Multiplier</b>	<b>=</b>	<b>Tool Tonnage Required</b>
<b>.375</b>	<b>X</b>	<b>.250</b>	<b>X</b>	<b>80</b>	<b>=</b>	<b>7.5 Ton</b>	<b>X</b>	<b>1.0</b>	<b>=</b>	<b>7.5 Ton</b>

Material: Aluminum - Brass - Copper - Mild Steel - 50% Carbon Steel - Cold Drawn Steel - Stainless Steel  
 Multiplier: .38 .70 .56 1.00 1.50 1.20 1.50